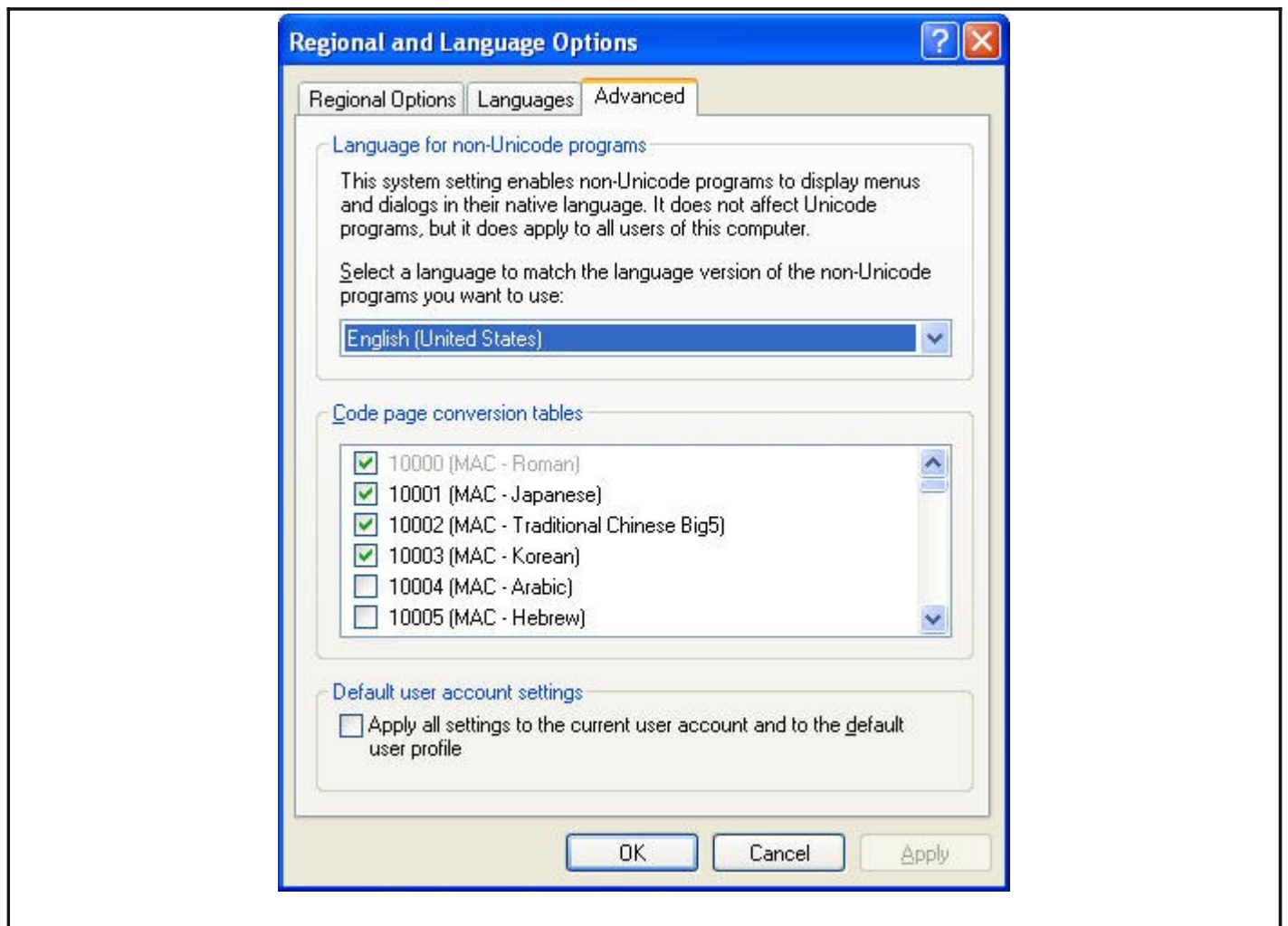


In some cases on Windows based computers that the Native Language is not set to English, COSMOS may operate improperly. To remedy this situation perform the following procedure.

- I.) Open the control panel
- II.) Locate the Regional and Language options on your computer
- III.) Select the "Advanced Tab" (the screen should appear something like below)



IV.) In the options for "Select a language to match the language version of the non-Unicode programs you want to use". Choose "English (United States)"

V.) Press OK and then reboot the computer

VI.) Re-Start COSMOS and the errors should go away